

TITAN AMERICA Stucco Cement



Procedures for Application of Stucco

- Prepare the block wall to remove all containments/debris and it should be uniformly fogged with water just prior to the application of the stucco.
- One bag of Stucco equals one (1) cubic foot.
- Proportional mix is three (3) parts sand to one (1) part stucco
- Three (3) cubic feet of sand and one (1) cubic foot of stucco.

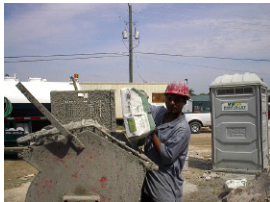
Mixing instructions



Add 2/3 the total potable water into a mechanical mixer.



Add approximately 1/2 the total amount of "coarse" sand (ASTM C 144 approved).



Add stucco bag(s).



Add remaining amount of sand.



Add remaining amount of water to bring the stucco to a desired consistency.

Mix a minimum of five (5) minutes after all the ingredients have been added.

Two Coat Application Over Block

- As per ASTM C926
- The application of the coats of stucco should not be interrupted within a wall or panel. This promotes a more intimate contact between coats and complete curing.
- The first (scratch) coat shall be applied with sufficient material and pressure to ensure tight contact and bonding to the block.
- After the first coat becomes sufficiently rigid enough to support the second (brown) coat, apply the second coat with sufficient material and pressure to ensure tight contact and bond and bring the surface to a true even plane.
- The stucco should be fogged after each coat is applied and before the stucco crew leaves for the day.

Three Coat Application Over Lath

- As per ASTM C1063
- The first (scratch) coat shall be applied with sufficient material and pressure to form keys through the lath.
- As soon as the first coat becomes firm, the stucco should be scored horizontally.
- After the first coat becomes sufficiently rigid enough to support the second (brown) coat, apply the second coat with sufficient material and pressure to ensure tight contact and bond.
- The surface of the second (brown) coat should be brought to a true even plane with a rod or straight-edge.
- The third (finish) coat shall be applied with sufficient material and pressure to ensure tight contact and bond with the second (brown) coat.
- The stucco should be fogged after each coat is applied and before the stucco crew leaves for the day.

Time note:

There is no set time frame between coats due to the different weather conditions and time of the day, month, and/or year.

Stucco Note:

Stucco is merely used as a decorative coating and not designed or intended to hold the structure together.



Titan Florida LLC
11000 NW 121st Way
Medley, FL 33178
866-907-0994
www.titanamerica.com

Excellence Matters



Produced in an Energy Star Certified facility.